



# Mustang & Cougar

**Automotive Weather Seals  
and Detail Rubber Parts**



**The Most Advanced OEM Replacement  
Weatherstrip You Can Buy !!!**

Mustang & Cougar

# Why buy SUPERsoft®-brand Weatherstrip?

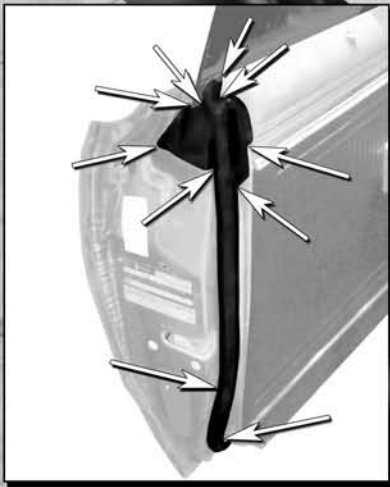
... because it's made better



... because it tests and feels softer



... because it fits better



... because it looks better

... because it lasts longer



## Because You Can Trust It!!

# Mustang

*In this Catalog ...*

**Mustang Basic Kits**

**2**

**Molded Door Seals**

**4**

**Roof-rail & T-top Seals**

**6**

**Trunk & Hatch Seals**

**7**

**Window Detail Parts**

**8**

**Hood & Cowl Parts**

**12**

**Engine & Firewall Parts**

**13**

**Body & Chassis Parts**

**14**

**Interior & Electrical Parts**

**16**

**Dear Fellow Enthusiast:** As you can see, we have an all-new catalog dedicated exclusively to Mustangs and Cougars. Due to the continuing popularity of these cars, we thought it best to start issuing new catalogs dedicated to makes and models to help our distributors and end-users find the restoration parts they want and need. Additionally, we have a large offering of rubber parts for Mustangs and want to ensure that you have the information you need at your fingertips. If you want to know the parts we offer for specific model years, please visit our website at [www.metromp.com](http://www.metromp.com). There you can create and print-out a custom catalog for any model car you are working on and instantly know exactly what is available from Metro Moulded Parts, Inc.! In addition to this parts catalog for Mustangs and Cougars, we are working on numerous others that will support the most popular automotive lines in the restoration marketplace. Please contact your Customer Service representative to request catalogs for other car models or to ask about new part offerings.

Don't let anyone tell you there's no difference in rubber parts! Here at Metro, we continue to work hard to make our premium quality OEM reproduction and restoration parts the very best available by paying careful attention to the smallest details. Compare our products before buying any other brand! We're sure you'll find our parts give you the best overall value when you compare softness, appearance, fit, performance, durability and warranty. Attention to quality and detail are what we call "The Visible Difference." Prove it to yourself by comparing brands. We welcome the challenge!

To all of you who helped make Metro Moulded Parts, Inc. the leading supplier of restoration rubber products, our sincerest

**Thanks!!**

## Mustang Basic Kits!

Our basic kits include the vital pieces of weatherstripping you need to get your restoration or repairs started right! Kit prices are typically about 10% less than the individual sets of parts they contain. The same high quality Metro parts are used in all our basic weatherstrip kits and carry the same "no hassle", 15-year full replacement warranty and 100% satisfaction guarantee!

Basic kits contain the "dynamic seals" that seal the major openings in your car to keep out wind and weather. For 2-door hardtops, a basic kit includes the door, roof-rail and trunk seals. Metro Moulded Parts, Inc. makes thousands of additional detail rubber parts for hundreds of different makes and models of cars and trucks. If you don't see what you are looking for, just give us a call. The parts you need might be available and ready to ship the same day you order!



RKB 6000-100

- '65-'66 Mustang Coupe. Door, roof-rail and trunk seals.
- '65-'66 Mustang Fastback. Door, roof-rail and trunk seals.
- '67-'68 Mustang Coupe. Door, roof-rail and trunk seals.
- '67-'68 Mustang Fastback. Door, roof-rail and trunk seals.
- '67-'68 Cougar. Coupe. Door, roof-rail and trunk seals.

- RKB 6000-100
- RKB 6000-102
- RKB 6000-103
- RKB 6000-104
- RKB 6500-103



RKB 6000-102



RKB 6000-103

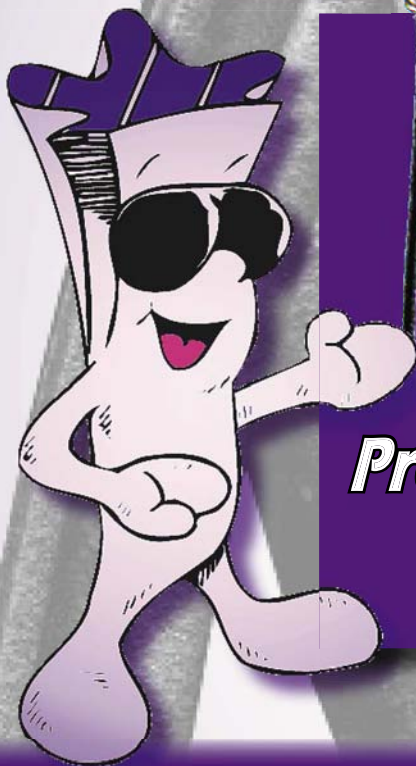


*"Our basic kits typically cost about 10% less than the individual parts they contain. That's like getting the trunk seal for free!"*

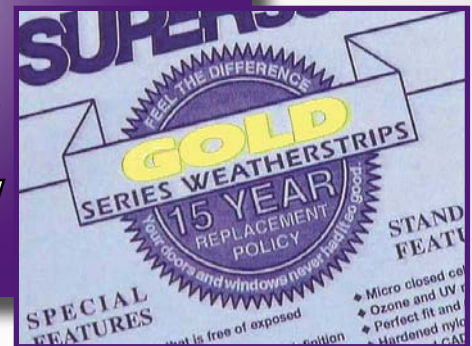


RKB 6500-103

RKB 6000-104



**Proudly Made in  
the USA!!!**



**Insist on Metro Quality!**



**Ask for Metro  
by Name!**

At Metro we believe that quality parts go beyond 'just working.' We formulate rubber to meet the requirements of the part, instead of using cheap, commodity bulk rubber for all applications. Our standards include coated, molded-in steel cores, correct tool-installed clips and beautifully detailed outer surfaces. We even re-create details from the original parts that won't be seen once the part is installed! All of our standards are necessary to provide you with show-quality results. Don't settle for less! Find out what you are getting for your money and ASK FOR METRO QUALITY. You'll be glad you did. **There Truly is a Visible Difference ...**

## "No Slam" Molded Door Seals

*Original Mustang and Cougar seals were composed of open-cell sponge and a formed outer skin. The sponge portion dries out and collapses, while the formed skin galled and was easily punctured. Since then, technology has advanced. Our seals are a closed-cell EPDM sponge with a tough, unified outer skin that will not peel, crack, split, gall or glaze. It's your first and best line of defense against the damaging effects of UV light, ozone and chemicals that cause rubber to break down and start to leak. Ask yourself this: What's your best choice when it comes to protecting your car's pricey interior?*

'65-'66	Mustang, Cougar. Molded door seals. With clips and molded ends. 80 in. long each. Pair. R&L.	<b>LM 10</b>
'67-'68	Mustang, Cougar. Molded door seals. 2-door hardtop and convertible. With clips and molded ends. 82-1/2 in. long. Pair. R&L.	<b>LM 11</b>
'79-'93	Mustang. Molded door seal. Fits either side of 2-door sedan or convertible. (Also fits '79-'86 Capri). Each.	<b>LM 110-M</b>



**LM 10**



**LM 11**



**LM 110-M**



**The Visible Difference  
is in the Details!**



## **Did You Know Metro Quality ...**

Metro Moulded Parts, Inc. is the **only** manufacturer of automotive restoration rubber parts that uses specially formulated rubber compounds specifically designed to resist the damaging effects of UV light and ozone. We use no accelerants in the molding process, which causes rubber parts to age and fail prematurely. We use only the highest grades of virgin rubber in all our parts and add no bulk fillers of any kind that can weaken the part. Get the facts and you'll find out – there **Truly is a Visible Difference.**



... **Starts with the Rubber?**

## **Most Items Ship the Same Day!**

Manufacturing and sales take place at our central facility in Minneapolis, Minnesota. From a well-stocked warehouse to computer processing of your orders, we're committed to providing you with both the highest quality product and complete service support.



## Roof-rail & T-top Seals!

RR 6900



RR 6901



RR 6902



RR 6903



IS-TP 6600-A



IS-TP 6600-B



'65-'66 Mustang, 2-door hardtop coupe. Roof-rail seals with molded ends. 73-1/2 in. long. Pair. R&L.

*(Also fits '67-'68 Cougar.)*

**RR 6900**

'65-'66 Mustang, 2-door fastback. Roof-rail seals with molded ends. 66-1/2 in. long. Pair. R&L.

**RR 6901**

'67-'68 Mustang, 2-door hardtop. Roof-rail seals with molded ends. 69-1/2 in. long. Pair. R&L.

**RR 6902**

'67-'68 Mustang, 2-door fastback. Roof-rail seals with molded ends. 69-3/4 in. long. Pair. R&L.

**RR 6903**

'79-'93 Mustang, 2-door T-top. T-top side rail seal. For left (driver's) side. Each. *(Also fits '79-'86 Capri.)*

**IS-TP 6600-A**

'79-'93 Mustang, 2-door T-top. T-top side rail seal. For right (passenger's) side. Each.

**IS-TP 6600-B**

*(Also fits '79-'86 Capri.)*



# Mustang Trunk & Hatch Seals!

- |   |                   |
|---|-------------------|
| '79-'93 Hatchback seal. (Imported). Replaces OEM# D9ZZ-6143720A. (Also fits '79-'86 Capri). Each.   | <b>IS-TK 67</b>   |
| '79-'93 Trunk seal. (Imported). Coupe and convertible. 15 ft. 4-1/2 in. long. Replaces OEM# D9AZ-5443720A. (Also fits '79-'86 Capri.) Each.           | <b>IS-TK 68</b>   |
| '79-'93 Hatchback seal. (Domestic). Replaces OEM# D9ZZ-6143720A. Each. (Also fits '79-'86 Capri).   | <b>TK 10-H</b>    |
| '79-'93 Trunk seal. (Domestic). Coupe and convertible. 15 ft. 4-1/2 in. long. Replaces OEM# D9AZ-5443720A. (Also fits '79-'86 Capri.) Each.           | <b>TK 10-M</b>    |
| '64-'70 Trunk seal. Coupe and convertible (does not fit fastback). 11 ft. 1 in. long. Replaces OEM# COMB-6443720-C. (Also fits '67-'70 Cougar). Each. | <b>TK 51-A/14</b> |
| '65-'68 Trunk seal. Fastback. 10 ft. 8-1/4 in. long. Each.  | <b>TK 51-B/11</b> |
| '64-'67 Trunk liner. White and black plaid printed on gray vinyl background. Felt backing. 52 in. wide. Per foot.                                     | <b>M 25</b>       |
| '68-'73 Trunk liner. White and black random design printed on gray-green vinyl background. White felt backing. 52 in. wide. Per foot.                 | <b>M 26</b>       |
| '64-'73 Trunk bumper. 7/8 in. high, 5/8 in. OD. Uses two per car. Each.   | <b>SB 30</b>      |
| '65-'68 Trunk mat. Coupe and convertible (does not fit fastback). Print on rubber. Replaces OEM# C5ZZ-6545456-CR. Each.                               | <b>TM 3301-A</b>  |

## Mustang Trunk & Hatch Seals

			
IS-TK 67	IS-TK 68	M 25	M 26
			
SB 30		TK 10-H	
			
TK 10-M	TK 51-A/14	TK 51-B/11	TM 3301-A

## Mustang Window Detail Parts

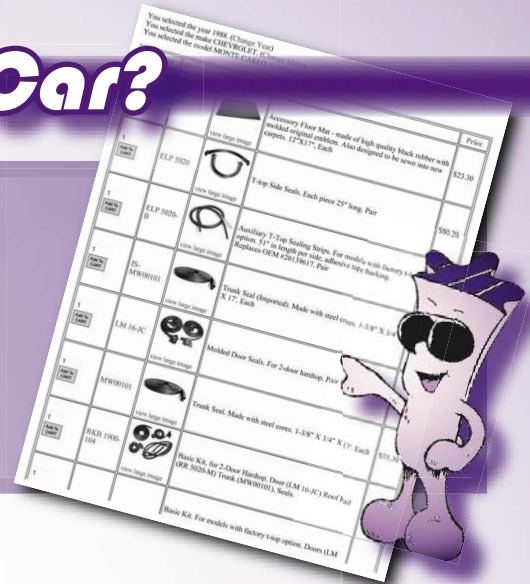
### Mustang Window Detail Parts

			
IS-WC 6600-20	IS-WC 6600-21	VS 3-C	VS 3-E
			
VS 3-T	VS 4	VS 6	VWS 6600
			
VWS 6600-R	VWS 6601-R	WR 6900	WR 6901

'64	Mustang. Rear roll-up window seals. Two 18 in. sections slide into metal track. No steel insert. Pair.	<b>VS 4</b>
'64-'68	Mustang. Vertical vent window seals. Two 17 in. sections slide into metal track. Pair.	<b>VS 6</b>
'65-'66	Mustang. Front vent window division bar seals. Formed with steel rod. 10-1/2 in. long. Each.	<b>VS 3-E</b>
'65-'66	Mustang. Front vent window seals. Made with steel core. 17-1/4 in. x 7-1/2 in. Replaces OEM# C5ZZ-6521448/9B. See p/n VS 3-E for division bar seal. Pair. R&L.	<b>WR 6900</b>
'65-'66	Mustang. Vulcanized rear windshield seal. Fastback 2+2. Each.	<b>VWS 6600-R</b>
'65-'68	Mustang ('65-'66), Cougar ('67-'68). Coupe. Rear side roll-up window seals. Two 15-7/8 in. sections slide into metal track. Pair. R&L.	<b>VS 3-C</b>
'65-'68	Mustang ('65-'66), Cougar ('67-'68). Coupe. Vulcanized windshield seal. Each.	<b>VWS 6600</b>
'65-'68	Mustang. Vulcanized rear windshield seal. Coupe. Each.	<b>VWS 6601-R</b>
'67-'68	Mustang. Front vent window seals. Made with steel core. Includes division bar seals. Replaces OEM# C7ZZ-6521448/9-AR. Pair. R&L.	<b>WR 6901</b>
'71-'73	Mustang. Rear roll-up window seals. Fastback. Pair. R&L.	<b>VS 3-T</b>
'83-'86	Flocked window channel. (Imported). '83-'86 fits driver's side. Each.	<b>IS-WC 6600-21</b>
'83-'93	Flocked window channel. (Imported). '83-'93 fits passenger's side. '87-'93 fits driver's side. Each.	<b>IS-WC 6600-20</b>

# Working on a Different Car?

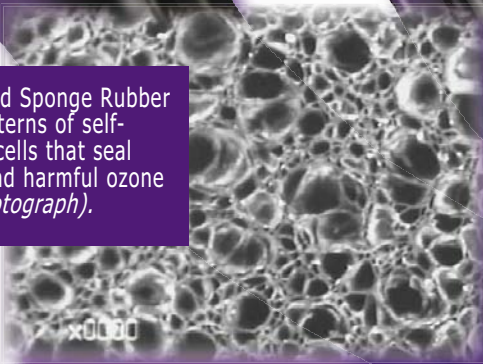
Get a free **Custom Catalog** of Metro parts for any vehicle we support by visiting our website at [www.metrommp.com](http://www.metrommp.com) and clicking on "Search For Parts." Or call us and we'll print one for you and mail it free.



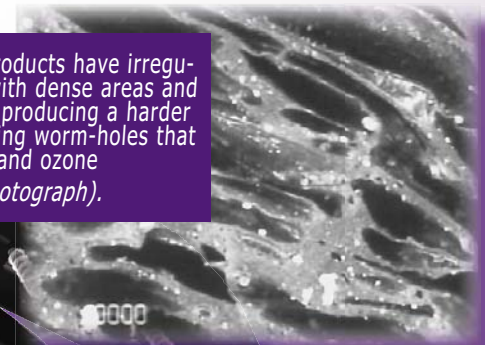
# The Quality is in the Details!!!

Metro SUPERsoft® brand Sponge Rubber has a uniform, closed-cell microstructure that forms an outer skin free from exposed cells and flaws. Unlike competitors' products that are coated with an outer latex skin, SUPERsoft® brand Sponge Rubber seals won't bruise, gall, blister, glaze, crack or peel.

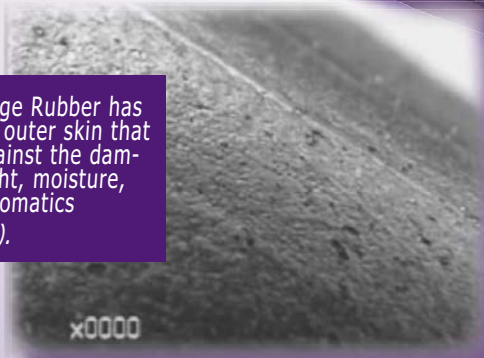
SUPERsoft brand Sponge Rubber has regular patterns of self-enclosed microcells that seal out moisture and harmful ozone (100x microphotograph).



Competitive products have irregular structure with dense areas and open areas ... producing a harder seal and creating worm-holes that trap moisture and ozone (100x microphotograph).



SUPERsoft brand Sponge Rubber has an integrated, smooth outer skin that is the first defense against the damaging effects of UV light, moisture, ozone and chemical aromatics (50x microphotograph).



Competitive products have skin with shingles and surface tears that provide paths for moisture and gases to penetrate (50x microphotograph).



## Mustang Sweeper Kits!

*At Metro Moulded Parts, we take pride in offering you only the best in top quality restoration parts. We've backed it up with a 100% satisfaction guarantee since 1918! The following sweeper kits for Mustang are just one part of our commitment to you, the customer. 8-piece kits include two front inner sweeps, two front outer sweeps, two rear inner sweeps and two rear outer sweeps. 4-piece kits include inner and outer belt moldings. All sweeps are chrome-beaded, fuzzy-lined with the correct clips included and ready to install.*



'64½-'65	Window sweeper kit. Early model coupe and convertible. 8-piece kit.	<b>WC 6900-10</b>
'64½-'65	Window sweeper kit. Early model fastback. 8-piece kit.	<b>WC 6900-11</b>
'65-'66	Deluxe window sweeper kit. Early model coupe and convertible. 15-piece kit.	<b>WC 6900-12</b>
'65-'66	Deluxe window sweeper kit. Early model fastback. 11-piece kit.	<b>WC 6900-13</b>
'67-'68	Window sweeper kit. Coupe. 10-piece kit.	<b>WC 6900-14</b>
'67-'68	Window sweeper kit. Convertible. 10-piece kit.	<b>WC 6900-15</b>
'67-'68	Window sweeper kit. Fastback. 6-piece kit.	<b>WC 6900-16</b>
'69	Window sweeper kit. Coupe. 8-piece kit.	<b>WC 6900-17</b>
'70	Window sweeper kit. Coupe. 8-piece kit.	<b>WC 6900-18</b>
'69-'70	Window sweeper kit. Convertible. 8-piece kit.	<b>WC 6900-19</b>
'69-'70	Window sweeper kit. Fastback. 4-piece kit.	<b>WC 6900-20</b>
'71-'73	Window sweeper kit. Coupe. 8-piece kit.	<b>WC 6900-21</b>
'71-'73	Window sweeper kit. Convertible. 8-piece kit.	<b>WC 6900-22</b>
'71-'73	Window sweeper kit. Fastback. 8-piece kit.	<b>WC 6900-23</b>
'71-'73	Window sweeper kit. Supplemental. 2-piece kit.	<b>WC 6900-24</b>
'74-'78	Window sweeper kit. Mustang II. 4-piece kit.	<b>WC 6900-25</b>
'64	Mustang. Outside door window sweeper. Flexible dense rubber. 48 in. piece. Each.	<b>WC 23-48</b>
'64-'67	Mustang. Rigid division bar channel. Stainless steel bead, heavy steel core and pile lining. 96 in. piece. Each.	<b>WC 28-96</b>
'64½-'65	Window sweeper kit. Early model coupe and convertible. Outers only. 4-piece kit.	<b>WC 6900-26</b>
'64½-'65	Window sweeper kit. Early model fastback. Outers only. 4-piece kit.	<b>WC 6900-27</b>

***If we wouldn't want to put it on our car ...***

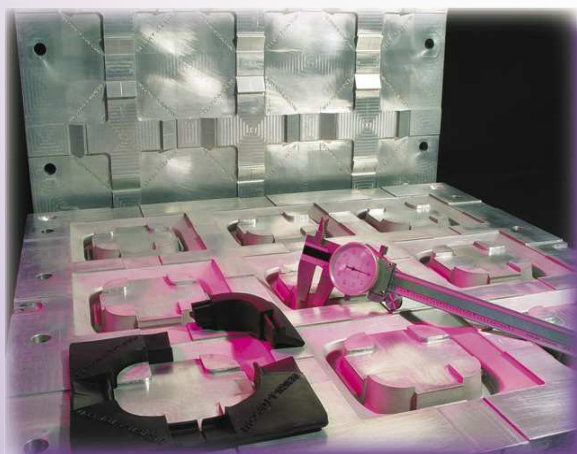
## Mustang Sweeper Kits (Cont.)

*These Mustang channels and sweepers come with mitered corners and bends, with the correct mounting clips already installed!!*

'67-'68	Window sweeper kit. Coupe. Outers only. 4-piece kit.	<b>WC 6900-28</b>
'67-'68	Window sweeper kit. Convertible. Outers only. 4-piece kit.	<b>WC 6900-29</b>
'67-'68	Window sweeper kit. Fastback. Outers only. 4-piece kit.	<b>WC 6900-30</b>
'69-'70	Window sweeper kit. Coupe. Outers only. 4-piece kit.	<b>WC 6900-31</b>
'69-'70	Window sweeper kit. Convertible. Outers only. 4-piece kit.	<b>WC 6900-32</b>
'69-'70	Window sweeper kit. Fastback. Outers only. 4-piece kit.	<b>WC 6900-33</b>
'67-'68	Window sweeper kit. Cougar. Coupe. Outers only. 4-piece kit.	<b>WC 6900-34</b>

## The Metro Difference!

*Some people think a rubber part is just a rubber part. But there's a world of difference! SUPERsoft® brand weatherstrips and seals are made from a proprietary rubber formula that took years to perfect. Our molds are designed using CAD/CAM technology and machined to the closest tolerances using state-of-the-art CAD/CAM design*



*and CNC milling tools. Numerical temperature and pressure controls ensure consistent cure cycles that eliminate scorched and under-cured parts. Hot-bonded joints and tough Nylon 6-6 mounting pins ensure your seal will stand up to rough handling. Besides quality in design and construction, our seals are up to 35% softer than other brands. **That's a difference you can see and feel!***

**... we wouldn't want you to put it on yours!**

## Mustang Hood & Cowl Parts!

HA 2	HA 3	HA 9	HF 2
<p>'64 Mustang. Hood bumper. With steel core, held by screw (not supplied). Each. <b>HF 40</b></p> <p>'64-'66 Mustang. Hood adjustment bolt and bumper. 1 in. dia. rubber head. <b>HA 2</b> 5/16 in. thk. x 18 thd. x 1-3/4 in. long. Each.</p> <p>'64-'66 Mustang. Hood adjustment bolt and bumper. 1-1/8 in. dia. rubber head. <b>HA 3</b> 5/16 in. thk. x 18 thd. x 2-1/8 in. long. Each.</p> <p>'65-'73 Mustang. Hood-to-radiator adjustment bolt and bumper. 1-7/16 in. dia. <b>HA 9</b> rubber head. 9/16 in. thk. x 18 thd. x 1-3/8 in. long. Each.</p> <p>'65-'67 Mustang. Hood-to-fender bumper. Each. <b>HF 45</b></p> <p>'69-'79 Mustang ('69), Cougar ('70-'79). Hood bumper. Each. <b>HF 2</b></p>			HF 40  HF 45

## Why Not Do It Right the First Time?



*Consider what it costs you in time, money and aggravation to do something over. When you consider how much time and effort you've already invested in your restoration project, does it make sense to skimp on the rubber? There's cheap stuff out there. The difference in cost is a few dollars per set of seals. But what does it cost you in the long run to buy cheap? Drilling holes ... replacing broken pins ... adjusting and re-adjusting doors and windows. Not to mention replacing the seals in a few years when they fail. And they will fail. Don't settle for less! Find out what you are getting for your money and **ASK FOR METRO QUALITY!** You'll be glad you did. **There Truly is a Visible Difference ...***

## Mustang Engine & Firewall Parts!



RP 2



RP 2-SET



RP 2-B



RP 2-C



RP 2-F



SB 89-A

'64-'65 Generator boot. Replaces OEM# C1AZ-10170-B. (Note: *end-user may need to cut a notch to fit, based on the type of generator used.*) Each.

RP 2-F

'64-'66 Hood bumper. Snap-in wire base like original. Each.

SB 89-A

'65-'73 Brake adjuster hole cover. Four used per car. Fits 1/4 in. wide x 1 in. long slot. Each.

RP 2

'65-'73 Brake adjuster hole cover. Fits 1/4 in. wide x 1 in. long slot. 4-piece set.

RP 2-SET

'67-'73 Brake master cylinder cover seal. Fits '67-'73 drum brakes; '72-'73 disc brakes. *Also fits '74-'75 Mustang II.* Replaces OEM# C7AZ-2167-A. Each.

RP 2-B

'67-'71 Brake master cylinder cover seal. Replaces OEM# 5470861. 5-9/16 in. long, 2-5/8 in. wide. (*Also fits '67-'71 Cougar.*) Each.

RP 2-C

Questions? Ask for Technical Assistance ...

**We'll be glad to help! 1-800-878-2237**

## Mustang Body & Chassis Parts!

*Keep your car "squeak-free" with new, live rubber body cushions, grommets and bushings. Detail the outer body with clean new mounting pads!!*

'64	Stabilizer bar bushings. 1-9/16 in. long x 1-1/2 in. wide x 1-5/8 in. high, 15/16 in. ID. Pair.	<b>BN 32-D</b>
'64	Rear spring and front hanger shackle bushing. 2 in. bottom OD, 1-5/8 in. high, 3/4 in. ID. Each.	<b>BN 108</b>
'64-'65	Spring and shackle bushing. 1 in. bottom OD x 1-5/8 in. high, 9/16 in. ID. Each.	<b>BN 20</b>
'64-'66	Rear quarter panel drain valve. 1-9/16 in. between holes. Replaces OEM #C4MZ-62103. Each.	<b>SM 64-B</b>
'64-'67	Shock absorber grommet. 1-1/4 in. bottom OD, 1 in. high., 3/4 in. ID. Each. <i>(Also fits '67 Cougar).</i>	<b>BN 12</b>
'64-'69	Suspension ball joint dust seal. 3/4 in. top ID, 1-11/16 in. bottom OD, 3/4 in. high. For some (rare) models. Check dimensions against original. Each.	<b>BN 101-B</b>
'64-'03	Bottom plug. Fits a 1-1/2 in. dia. hole. Each.	<b>SB 48</b>
'65	Trunk lock pad. 1-1/2 in. wide x 1-5/8 in. long. Each.	<b>MP 1051</b>
'65	Mirror pad. 1-5/8 in. wide x 5-5/8 in. long. Each.	<b>MP 1052</b>
'65-'66	Door handle pads. 2-1/8 in. long x 1-1/8 in. wide. Set. R&L.	<b>MP 1050</b>
'65-'66	Back-up light mounting base pads. 4-1/8 in. wide x 4-5/8 in. long, 3-5/16 ID. Pair.	<b>MP 1052-B</b>
'65-'66	Park light mounting base pads. 3-3/4 in. OD, 3 in. ID. Pair.	<b>MP 1052-C</b>
'65-'66	Tail-light mounting base pads. 6-1/2 in. x 5 in. Pair.	<b>MP 1052-E</b>
'65-'67	Front stabilizer end repair kit. 22-piece set for two stabilizer bars. Contains all rubber bushings, washers, bolts and nuts for one front end. Set.	<b>BNK 22</b>
'65-'68	Gas filler neck gasket. Natural cork. 2-1/2 in. ID, 3-11/16 in. OD. Each.	<b>GF 46</b>
'65-'69	Driveshaft cushion. 3-15/16 in. OD, 1-1/2 in. ID, 2 in. wide. Each.	<b>BN 45</b>
'65-'73	License lamp lens pad. 1-1/2 in. wide x 3-1/8 in. long. Each.	<b>MP 1052-F</b>
'66-'67	Tail-light bezel gaskets. 6-5/8 in. x 2-1/2 in. Uses six per car. Pair.	<b>MP 1052-D</b>
'66-'80	Mustang, Mustang II ('74-'78), Cougar ('67-'80). Windshield reveal molding clip. Steel. Each.	<b>WF 228-A</b>
'67-'68	Door handle pads. 2-3/8 in. long x 1-1/8 in. wide. Set. R&L.	<b>MP 1051-A</b>
'67-'68	Back-up light mounting base pads. Pair.	<b>MP 1052-A</b>
'71-'73	Airfoil bracket to body pads. 2 in. wide x 4-3/8 in. long. Pair. R&L.	<b>MP 1050-A</b>
'73-'75	Mustang ('73), Mustang II ('74-'75). Rear windshield reveal molding clip. Steel. Each.	<b>WF 233</b>



## Lifetime Warranty? Well ... Maybe

*Don't be fooled by claims of "Lifetime Warranty" on the rubber parts you buy! "Lifetime Warranty" is a legal term that defines a period of use set by law that varies by state. It can be as little as three years. Metro SUPERSOFT® weatherstrip, seals and detail rubber parts come with a 15-year Full Replacement Guarantee. We promise that if your Metro-made part fails at any time during that time we'll replace it free of charge. That's our "No Hassle" guarantee. Don't settle for a simple promise of satisfaction. Metro's warranty is the best you can get! Bar none!*



**Mustang Body & Chassis Parts**

BN 12	BN 20	BN 32-D	BN 45
BN 101-B	BN 108	BNK 22	GF 46
MP 1050	MP 1050-A	MP 1051	MP 1051-A
MP 1052	MP 1052-A	MP 1052-B	MP 1052-C
MP 1052-D	MP 1052-E	MP 1052-F	SB 48
SM 64-B	WF 228-A	WF 233	

## Mustang Interior & Electrical Parts!

**Complete your interior package with the detail parts that make your car seem new again. Protect your wiring with fresh new firewall grommets!!**



'64	Door lock button grommet. White nylon. 5/8 in. OD, 7/16 in. ID. Each.	<b>RP 303-K</b>
'64	Door lock knob. 1-1/2 in. long. Black rubber. Each.	<b>RP 306</b>
'64	Door lock knob. 1-1/2 in. long. Red rubber. Each.	<b>RP 306-A</b>
'64	Door lock knob. 1-1/2 in. long. Blue rubber. Each.	<b>RP 306-B</b>
'64	Door lock knob. 1-1/2 in. long. Turquoise rubber. Each.	<b>RP 306-C</b>
'64	Door lock knob. 1-1/2 in. long. Beige rubber. Each.	<b>RP 306-D</b>
'64-up	Accessory floor mat. Mustang, Mustang II ('74-up). Front or rear. High quality black rubber with original Ford emblem. Designed to be sewn into carpet. 12 in. x 17 in. Each.	<b>AC 33</b>
'65	Brake pedal pad. 3-3/8 in. wide. For cars with manual transmission and manual brakes (without disc brakes). Each.	<b>CB 111-C</b>
'65-'67	Brake pedal pad. 5 in. wide. For cars with automatic transmission and disc brakes. Each.	<b>CB 111-A</b>
'65-'67	Brake pedal pad. 5-1/8 in. wide. For cars with automatic transmission and power drum brakes. Each.	<b>CB 111-D</b>
'65-'67	Brake pedal pad. 5 in. wide. For cars with automatic transmission and manual brakes (without disc brakes). Each.	<b>CB 111-E</b>
'65-'68	Accelerator pedal pad. With chrome trim. One-piece construction, ready to bolt on. Correct density rubber. 2-1/8 in. x 5-7/8 in. Each.	<b>AP 44</b>
'65-'68	Clutch pedal pad. 3-7/16 in. wide. Each.	<b>CB 111-H</b>
'65-'68	Gear shift boot. With steel-reinforced base. Base dimensions: 5-1/4 in. x 5-1/8 in. Each.	<b>RP 33-S</b>
'65-'73	Brake pedal pad. 3-7/16 in. wide. For cars with manual transmission and disc brakes. Each.	<b>CB 111-B</b>
'65-'73	Brake pedal pad. 3-1/2 in. wide. For cars with manual transmission and manual brakes (without disc brakes). Each.	<b>CB 111-F</b>
'65-'73	Door lock button grommet. Clear plastic. Each.	<b>RP 303-L</b>
'68-'69	Ashtray bumper. 5/16 in. wide x 1/2 in. long x 3/16 in. high. Each.	<b>SB 76</b>
'69	Window crank handle knob. With attaching parts. Black rubber. Each.	<b>RP 400</b>
'69-'73	Clutch and brake pedal pads. 2-3/16 in. long x 3-3/8 in. wide. Pair.	<b>CB 111-K</b>
'73	Brake pedal pad. With chrome center ring. 5-7/16 in. wide. For cars with disc brakes. Each.	<b>CB 111-J</b>
'74	Mustang II (only). Window crank handle knob. With attaching parts. Clear plastic. Each.	<b>RP 400-B</b>

**Quality and Craftsmanship since 1918!**

**Mustang Interior & Electrical Parts**

 AC 33	 AP 44	 CB 111-A	 CB 111-B
 CB 111-C	 CB 111-D	 CB 111-E	 CB 111-F
 CB 111-H	 CB 111-J	 CB 111-K	 RP 303-K
 RP 303-L			 RP 306
 RP 306-A	 RP 306-B	 RP 306-C	 RP 306-D
 RP 33-S	 RP 400	 RP 400-B	 SB 76

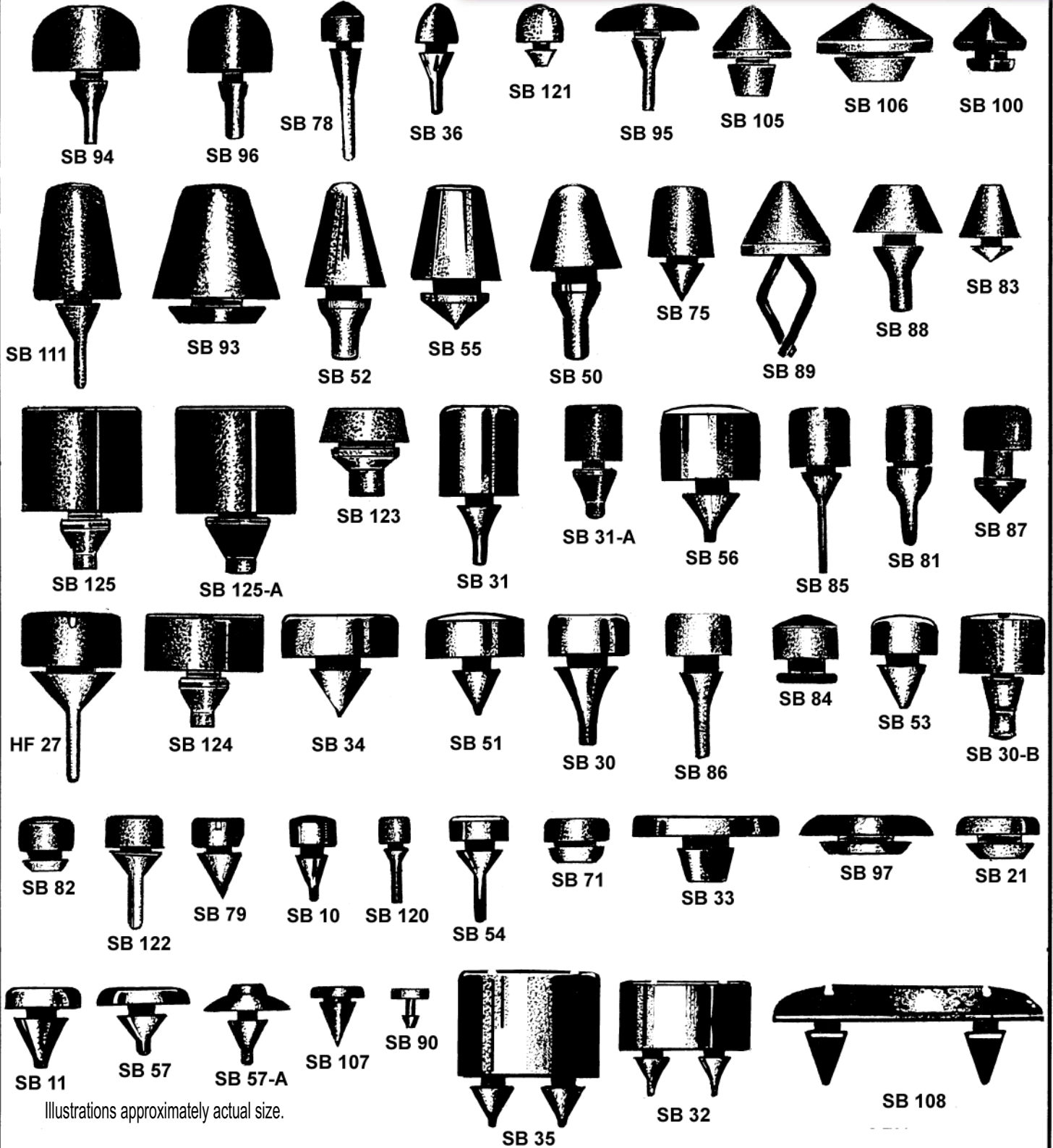
## Miscellaneous Parts!

 <p>IS-MW 10052</p>	 <p>IS-MW 10053</p>	 <p>MW 10000</p>
 <p>MW 10040</p>	 <p>MW 10041</p>	 <p>MW 10050</p>
 <p>MW 10062</p>	 <p>LP 111-X</p>	 <p>PK 161</p>



- Ball joint dust boot.** 1/2 in. shaft. Each. IS-MW 10052
- Tie rod dust boot.** 9/16 in. shaft. Each. IS-MW 10053
- Spoiler trim.** Fits over edge of sheet metal or fiberglass. Per foot. LP 111-X
- Gas filler splash shield.** Universal. Fits around filler neck to protect paint by preventing gas from dripping onto body panels during fill-up. Each. MW 10000
- Vacuum caps.** 2-1/8 in., 2-1/4 in., 2-3/8 in. 2-1/2 in. long. 2 each / 8-piece set. MW 10062
- Sheet metal grommet assortment.** Set MW 10050
  - two 3/16 in. ID, 5/16 in. OD.
  - two 5/16 in. ID, 5/8 in. OD.
  - two 3/8 in. ID, 1/2 in. OD.
  - one 7/16 in. ID, 9/16 in. OD.
  - one 5/8 in. ID, 3/4 in. OD.
- Coil-spring boosters.** Rear. 2-1/2 in. heavy duty. Set of two. MW 10040
- Coil-spring boosters.** Front. 1 or 1-1/2 in. heavy duty. Set of four. MW 10041
- Universal gasket material.** Unbeaded sheet rubber and cork. Three pieces. Kit. PK 161

# Universal Snap-In Bumpers

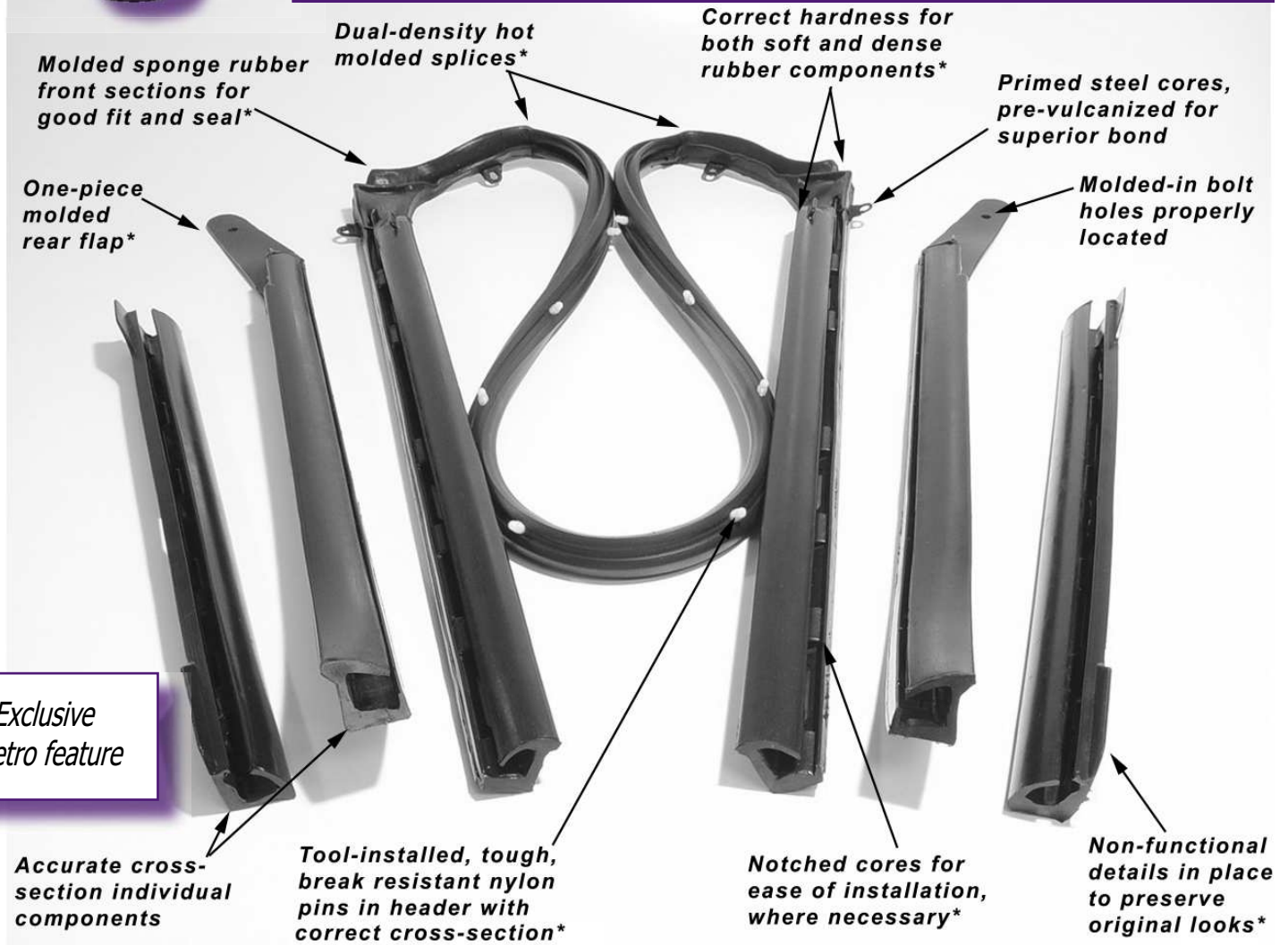


Illustrations approximately actual size.



Restoration experts know that cutting corners can cost them a lot in the long run. At Metro, we don't cut corners. We use only galvanized, corrosion-resistant metal cores. Our rubber formulations contain no filler materials and are designed to match the specific application of the parts we make. We use only tough, hardened nylon mounting clips and countersunk steel positioning pins of the correct profile in all our seals. CNC-machined molds and computer-controlled cure cycles produce smooth parts with a sleek, jet-black, non-fade finish that look better, perform better and last years longer than anything else you can buy! And we back all of our parts with a "No Hassle", full-replacement, 15-year warranty. That's why Metro Moulded Parts has been the first choice of restoration experts for decades.

Compare Metro's parts to any of our competitor's parts and you'll quickly see and feel which product is superior in looks, performance and durability. Try it yourself. Do a point-for-point comparison on the items listed below and you'll soon see the quality advantage is with Metro!



# YOUR GUARANTEE OF SATISFACTION

Founded in 1918, Metro Moulded Parts, Inc. is the leading USA manufacturer of top quality molded detail rubber parts and sponge rubber weatherstripping for antique, classic and restoration cars and trucks.

**Compare Metro's products to any of our competitors' products and you'll quickly see and feel which product is superior in looks, performance and durability.** Try it yourself! You'll see that we don't cut corners when we make an OEM replacement rubber part for your cherished car or truck.

In fact, we take extra care to ensure an identical match to the OEM original, right down to including non-functional details that aren't even visible when the part is installed! Among dozens of small details that contribute to the total quality of the part, at Metro going the extra mile includes hot-splicing component pieces, hand-trimming difficult parts, using the same type of mounting pins and metal cores as the OEM original, and three separate quality control checks during fabrication.

Our pledge is simple: every product we sell must meet our own demanding quality standards. At the root of these standards is this simple test – **if we wouldn't want to put it on our car, we wouldn't want you to put it on yours.** On that, there is no compromise.

You can be proud to use Metro products because we offer the best quality backed by the best guarantee in the business. So insist on Metro quality. And ask for Metro products by name!



**Metro SUPERsoft® brand Sponge Rubber** – The brand chosen by professional automobile restorers for many years, Metro SUPERsoft® EPDM sponge rubber delivers on its name! It's up to 30% softer than other brands while performing far better than competitive products and lasting years longer.

Due to its unmatched softness and pliability, SUPERsoft® brand sponge rubber weatherstrip and seals are easier to install and fit better than other products. **You won't have to slam your doors or trunk with SUPERsoft® Sponge weatherstrip installed on your car!** SUPERsoft® brand sponge is also the **best looking weatherstrip available** anywhere with a high gloss, smooth black skin that gives a refined Concours appearance. In addition, SUPERsoft® brand sponge rubber provides extraordinary resistance to hardening and decay caused by exposure to ozone and UV light. All Metro products are fabricated from the highest grades of virgin rubber using state-of-the-art, computerized mold-making techniques. These are just a few of the reasons why we can offer an exclusive, **15-year full replacement warranty** on every SUPERsoft® brand sponge rubber part we make and stand behind it with complete confidence. SUPERsoft® brand sponge rubber parts simply have no comparisons.



**Metro Legacy Polymers<sup>SM</sup> brand Dense Rubber** – Designed to outlast ordinary dense and solid rubber compounds, the Legacy Polymers<sup>SM</sup> brand represents a family of advanced rubber formulations and production techniques

developed over decades. Every Legacy Polymer<sup>SM</sup> rubber compound meets strict production specifications and fabrication guidelines to produce detail rubber parts and components that will *outlast* and *outperform* other solid rubber parts. Legacy Polymers<sup>SM</sup> compounds contain only virgin rubber, with none of the fillers or accelerators that cause other brands of dense and solid rubber parts to prematurely age and fail. Legacy Polymers<sup>SM</sup> compounds have additives that provide ozone and UV protection to resist these agents of decay. Our advanced rubber formulations are targeted to the specific applications. These features, along with our advanced computer controls and vulcanization processes, produce long-life solid rubber parts that are truly in a class by themselves.



**Import Select<sup>SM</sup>** – While the vast majority of our customers prefer the highest quality American-made parts for their restored American cars and trucks, Metro offers a limited selection of foreign-made parts for price sensitive users. Of the many parts available from foreign suppliers, *we have carefully*

*selected only the very best* for our Import Select<sup>SM</sup> product line. Some imported parts are inferior reproductions of the OEM originals they are designed to replace. Besides missing details, they may be fabricated from inferior grades of rubber or use cheap, metal cores and obsolete fabrication processes. At Metro Moulded Parts, we buy only from primary manufacturers and control the materials and processes used in production. We offer only those imported parts that meet our high quality standards.

**METRO**  
Moulded Parts Inc.

**Top Quality Restoration and Replacement  
Rubber Parts from the Makers of...**



**Metro Moulded Parts, Inc.**

11610 Jay Street, Minneapolis, MN 55448 - USA

toll-free: 1-800-878-2237 toll-free fax: 1-877-399-2562 phone: 763-757-0310

[www.metrommp.com](http://www.metrommp.com)